



LIMBA

SUSPENDED LUMINAIRE

LIMBA – Suspended luminaire for professional accentuated lighting in vintage design. The lampshade made of aluminium is as standard coloured on the outside and white on the inside and a textile cable underscores the high-quality appearance. In that way LIMBA becomes a decorative eyecatcher. Individual colour combinations are possible on request.



Ideal applications

A decorative eyecatcher to round off the store design
Vintage look meets modern technology



Customised style

The selection of cable and shade colours permits personal colour schemes: design your own personal LIMBA with the Style Generator!



Wide LED range

Large choice between professional LED equipment and filament lamps for E27 socket



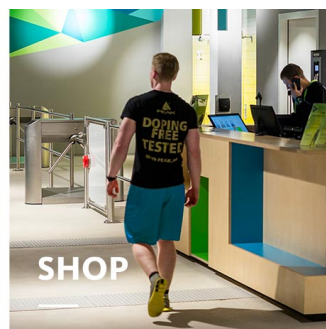
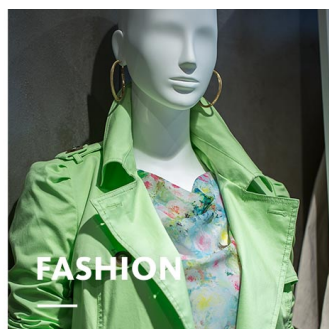
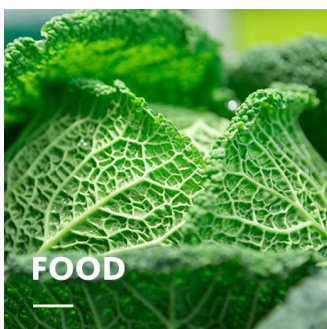
High lighting quality

Opal acrylic ring for perfect glare suppression and long-distance effect



Fast reflector replacement

Five beam angles for optimum goods illumination



LIMBA

www.oktalite.com/limba-p

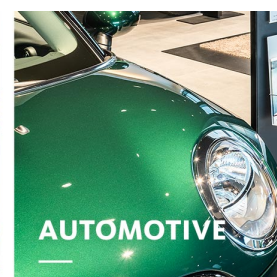
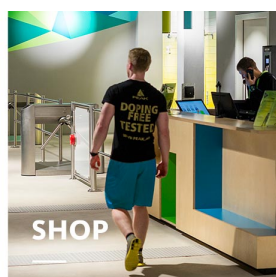
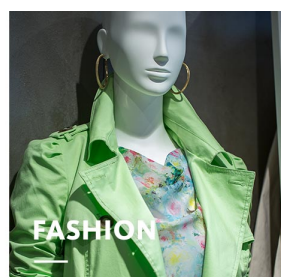
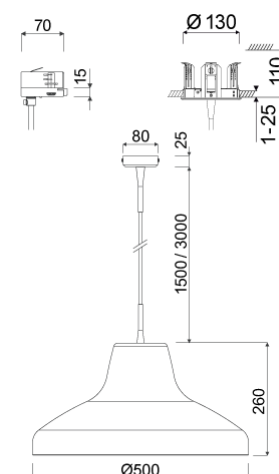
Type of luminaire	suspended luminaire
Application areas	Decorative lighting
Pan/tilt range	fixed
Mounting	3P Power Track Typ Global DALI, recessed, Surface mounted
Ceiling thickness	1 - 25 mm
Lighting technology	LED ^{IQ} DALI
LED Luminous Flux Class	3000 lm - 5000 lm
Light colour White	2700 K, 3000 K, 3000 K - Efficient White, 3000 K - Brilliant Colour, 3500 K, 4000 K, 4000 K - Efficient Cool
Light colour Food*	M, M+F, BF
Cooling	passive
Supply unit	DALI driver integrated
Luminaire colour	RAL 9005 jet black RAL 9016 traffic white Special colours on request
Surface	structure powder-coated
Suspension length	1500mm, 3000mm
Nominal voltage	220 - 240 V, 50/60Hz
Lighting controls	DALI DT6
Installation	Recommended for new installation.
Weight	Approx. 4.4 kg
Components	



Luminaire housing



Optic



Test seal

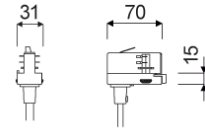


* M = Meat,
M = Meat, F = Fish,
BF = Brilliant Food

Technical details as well as weight specifications and measurements have been prepared with care. Errors excepted. All dimensions in mm · LED service life data: L80/B10 at ambient temperature (ta) 25°C. Rated lamp service life 50,000h. Luminous flux and efficiency specifications are subject to a tolerance of /- 10%. Min CRI Ra: >80 / >90· Product images are used as an example and may differ from the original · We reserve the right to make changes, insofar as they serve progress. The Single Lighting Regulation (SLR) documentation can be found in our download area. Oktalite Lichttechnik GmbH · Mathias-Brüggen-Str. 73 · 50829 Cologne · T 49 221 59767-0 · F 49 221 59767-40 · mail@oktalite.com · www.oktalite.com · 2022-11-29

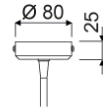
**LIMBA****oktalite**

Mounting 3P Power Track
 Supply unit integrated



LED Luminous Flux Class	Light colour	CRI R _a	system luminous flux*	System performance	Suspension length	Order number		
						white	silver	black
4000 lm	3000 K - Brilliant Colour	97	3905 lm	46 W	1500mm	10189788		10189790
4000 lm	3000 K - Brilliant Colour	97	3905 lm	46 W	3000mm	10189789		10189791
5000 lm	2700 K	81	4535 lm	36 W	1500mm	10189768		10189770
5000 lm	2700 K	81	4535 lm	36 W	3000mm	10189769		10189771
5000 lm	3000 K	83	4660 lm	36 W	1500mm	10189772		10189774
5000 lm	3000 K	83	4660 lm	36 W	3000mm	10189773		10189775
5000 lm	3000 K - Efficient White	94	4940 lm	46 W	1500mm	10189784		10189786
5000 lm	3000 K - Efficient White	94	4940 lm	46 W	3000mm	10189785		10189787
5000 lm	3500 K	85	4755 lm	36 W	1500mm	10189776		10189778
5000 lm	3500 K	85	4755 lm	36 W	3000mm	10189777		10189779
5000 lm	4000 K	83	4910 lm	36 W	1500mm	10189780		10189782
5000 lm	4000 K	83	4910 lm	36 W	3000mm	10189781		10189783
5000 lm	4000 K - Efficient Cool	91	5225 lm	34 W	1500mm	10249709		10249711
5000 lm	4000 K - Efficient Cool	91	5225 lm	34 W	3000mm	10249710		10249712
3000 lm	M	-	2845 lm	46 W	1500mm	10189792		10189794
3000 lm	M	-	2845 lm	46 W	3000mm	10189793		10189795
3000 lm	M+F	-	2650 lm	46 W	1500mm	10189796		10189798
3000 lm	M+F	-	2650 lm	46 W	3000mm	10189797		10189799
4000 lm	BF	-	3590 lm	40 W	1500mm	10213435		10213437
4000 lm	BF	-	3590 lm	40 W	3000mm	10213436		10213438

Technical details as well as weight specifications and measurements have been prepared with care. Errors excepted. All dimensions in mm · LED service life data: L80/B10 at ambient temperature (ta) 25°C. Rated lamp service life 50,000h. Luminous flux and efficiency specifications are subject to a tolerance of +/- 10%. Min CRI Ra: >80 / >90· Product images are used as an example and may differ from the original · We reserve the right to make changes, insofar as they serve progress. The Single Lighting Regulation (SLR) documentation can be found in our download area. Oktalite Lichttechnik GmbH · Mathias-Brüggen-Str. 73 · 50829 Cologne · T 49 221 59767-0 · F 49 221 59767-40 · mail@oktalite.com · www.oktalite.com · 2022-11-29

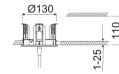
**LIMBA****oktalite**Mounting
Supply unitSurface mounted H3
integrated

LED Luminous Flux Class	Light colour	CRI R _a	system luminous flux*	System performance	Suspension length	Order number		
						white	silver	black
4000 lm	3000 K - Brilliant Colour	97	3905 lm	46 W	1500mm	10189824		10189826
4000 lm	3000 K - Brilliant Colour	97	3905 lm	46 W	3000mm	10189825		10189827
5000 lm	2700 K	81	4535 lm	36 W	1500mm	10189804		10189806
5000 lm	2700 K	81	4535 lm	36 W	3000mm	10189805		10189807
5000 lm	3000 K	83	4660 lm	36 W	1500mm	10189808		10189810
5000 lm	3000 K	83	4660 lm	36 W	3000mm	10189809		10189811
5000 lm	3000 K - Efficient White	94	4940 lm	46 W	1500mm	10189820		10189822
5000 lm	3000 K - Efficient White	94	4940 lm	46 W	3000mm	10189821		10189823
5000 lm	3500 K	85	4755 lm	36 W	1500mm	10189812		10189814
5000 lm	3500 K	85	4755 lm	36 W	3000mm	10189813		10189815
5000 lm	4000 K	83	4910 lm	36 W	1500mm	10189816		10189818
5000 lm	4000 K	83	4910 lm	36 W	3000mm	10189817		10189819
5000 lm	4000 K - Efficient Cool	91	5225 lm	34 W	1500mm	10249713		10249715
5000 lm	4000 K - Efficient Cool	91	5225 lm	34 W	3000mm	10249714		10249716
3000 lm	M	-	2845 lm	46 W	1500mm	10189828		10189830
3000 lm	M	-	2845 lm	46 W	3000mm	10189829		10189831
3000 lm	M+F	-	2650 lm	46 W	1500mm	10189832		10189834
3000 lm	M+F	-	2650 lm	46 W	3000mm	10189833		10189835
4000 lm	BF	-	3590 lm	40 W	1500mm	10213439		10213441
4000 lm	BF	-	3590 lm	40 W	3000mm	10213440		10213442

Technical details as well as weight specifications and measurements have been prepared with care. Errors excepted. All dimensions in mm · LED service life data: L80/B10 at ambient temperature (ta) 25°C. Rated lamp service life 50,000h. Luminous flux and efficiency specifications are subject to a tolerance of +/- 10%. Min CRI Ra: >80 / >90 · Product images are used as an example and may differ from the original · We reserve the right to make changes, insofar as they serve progress. The Single Lighting Regulation (SLR) documentation can be found in our download area. Oktalite Lichttechnik GmbH · Mathias-Brüggen-Str. 73 · 50829 Cologne · T 49 221 59767-0 · F 49 221 59767-40 · mail@oktalite.com · www.oktalite.com · 2022-11-29

**LIMBA****oktalite**

Mounting recessed H19 (Ø 130mm)
Supply unit integrated



LED Luminous Flux Class	Light colour	CRI R _a	system luminous flux*	System performance	Suspension length	Order number		
						white	silver	black
4000 lm	3000 K - Brilliant Colour	97	3905 lm	46 W	1500mm	10248017		10248019
4000 lm	3000 K - Brilliant Colour	97	3905 lm	46 W	3000mm	10248018		10248020
5000 lm	2700 K	81	4535 lm	36 W	1500mm	10247997		10247999
5000 lm	2700 K	81	4535 lm	36 W	3000mm	10247998		10248000
5000 lm	3000 K	83	4660 lm	36 W	1500mm	10248001		10248003
5000 lm	3000 K	83	4660 lm	36 W	3000mm	10248002		10248004
5000 lm	3000 K - Efficient White	94	4940 lm	46 W	1500mm	10248013		10248015
5000 lm	3000 K - Efficient White	94	4940 lm	46 W	3000mm	10248014		10248016
5000 lm	3500 K	85	4755 lm	36 W	1500mm	10248005		10248007
5000 lm	3500 K	85	4755 lm	36 W	3000mm	10248006		10248008
5000 lm	4000 K	83	4910 lm	36 W	1500mm	10248009		10248011
5000 lm	4000 K	83	4910 lm	36 W	3000mm	10248010		10248012
5000 lm	4000 K - Efficient Cool	91	5225 lm	34 W	1500mm	10249717		10249719
5000 lm	4000 K - Efficient Cool	91	5225 lm	34 W	3000mm	10249718		10249720
3000 lm	M	-	2845 lm	46 W	1500mm	10248021		10248023
3000 lm	M	-	2845 lm	46 W	3000mm	10248022		10248024
3000 lm	M+F	-	2650 lm	46 W	1500mm	10248025		10248027
3000 lm	M+F	-	2650 lm	46 W	3000mm	10248026		10248028
4000 lm	BF	-	3590 lm	40 W	1500mm	10248029		10248031
4000 lm	BF	-	3590 lm	40 W	3000mm	10248030		10248032

Technical details as well as weight specifications and measurements have been prepared with care. Errors excepted. All dimensions in mm · LED service life data: L80/B10 at ambient temperature (ta) 25°C. Rated lamp service life 50,000h. Luminous flux and efficiency specifications are subject to a tolerance of +/- 10%. Min CRI Ra: >80 / >90· Product images are used as an example and may differ from the original · We reserve the right to make changes, insofar as they serve progress. The Single Lighting Regulation (SLR) documentation can be found in our download area. Oktalite Lichttechnik GmbH · Mathias-Brüggen-Str. 73 · 50829 Cologne · T 49 221 59767-0 · F 49 221 59767-40 · mail@oktalite.com · www.oktalite.com · 2022-11-29

* System luminous flux based on medium flood reflector.



Efficient White: $R_s = 75$, $R_f = 91$, $R_g = 102$



Brilliant Colour: $R_s = 94$, $R_f = 95$, $R_g = 104$

Technical details as well as weight specifications and measurements have been prepared with care. Errors excepted. All dimensions in mm · LED service life data: L80/B10 at ambient temperature (t_a) 25°C. Rated lamp service life 50,000h. Luminous flux and efficiency specifications are subject to a tolerance of $\pm 10\%$. Min CRI Ra: >80 / >90 · Product images are used as an example and may differ from the original · We reserve the right to make changes, insofar as they serve progress. The Single Lighting Regulation (SLR) documentation can be found in our download area. Oktalite Lichttechnik GmbH · Mathias-Brüggen-Str. 73 · 50829 Cologne · T 49 221 59767-0 · F 49 221 59767-40 · mail@oktalite.com · www.oktalite.com · 2022-11-29



Optic Limba - LED ^{IQ} DALI

oktalite

Optic 3D faceted reflectors
Type interchangeable reflector system

Beam angle				Cover	LOR	Order number																			
Spot						white	silver	black																	
Limba - SP <table border="1"> <thead> <tr> <th>Höhe [m]</th> <th>KegelØ [cm]</th> <th>E(0°) [lx/klm]</th> <th>E(C0) [lx/klm]</th> </tr> </thead> <tbody> <tr> <td>1</td> <td>24</td> <td>6842</td> <td>3367</td> </tr> <tr> <td>2</td> <td>48</td> <td>1711</td> <td>842</td> </tr> <tr> <td>3</td> <td>73</td> <td>760</td> <td>374</td> </tr> </tbody> </table>				Höhe [m]	KegelØ [cm]	E(0°) [lx/klm]	E(C0) [lx/klm]	1	24	6842	3367	2	48	1711	842	3	73	760	374		without	87 %	10186914	-	-
Höhe [m]	KegelØ [cm]	E(0°) [lx/klm]	E(C0) [lx/klm]																						
1	24	6842	3367																						
2	48	1711	842																						
3	73	760	374																						

Beam angle				Cover	LOR	Order number																			
Medium Flood						white	silver	black																	
Limba - MF <table border="1"> <thead> <tr> <th>Höhe [m]</th> <th>KegelØ [cm]</th> <th>E(0°) [lx/klm]</th> <th>E(C0) [lx/klm]</th> </tr> </thead> <tbody> <tr> <td>1</td> <td>43</td> <td>3357</td> <td>1573</td> </tr> <tr> <td>2</td> <td>85</td> <td>839</td> <td>393</td> </tr> <tr> <td>3</td> <td>128</td> <td>373</td> <td>175</td> </tr> </tbody> </table>				Höhe [m]	KegelØ [cm]	E(0°) [lx/klm]	E(C0) [lx/klm]	1	43	3357	1573	2	85	839	393	3	128	373	175		without	88 %	10186915	-	-
Höhe [m]	KegelØ [cm]	E(0°) [lx/klm]	E(C0) [lx/klm]																						
1	43	3357	1573																						
2	85	839	393																						
3	128	373	175																						

Beam angle				Cover	LOR	Order number																			
Flood						white	silver	black																	
Limba - FL <table border="1"> <thead> <tr> <th>Höhe [m]</th> <th>KegelØ [cm]</th> <th>E(0°) [lx/klm]</th> <th>E(C0) [lx/klm]</th> </tr> </thead> <tbody> <tr> <td>1</td> <td>66</td> <td>1981</td> <td>857</td> </tr> <tr> <td>2</td> <td>132</td> <td>495</td> <td>214</td> </tr> <tr> <td>3</td> <td>197</td> <td>220</td> <td>95</td> </tr> </tbody> </table>				Höhe [m]	KegelØ [cm]	E(0°) [lx/klm]	E(C0) [lx/klm]	1	66	1981	857	2	132	495	214	3	197	220	95		without	87 %	10186916	-	-
Höhe [m]	KegelØ [cm]	E(0°) [lx/klm]	E(C0) [lx/klm]																						
1	66	1981	857																						
2	132	495	214																						
3	197	220	95																						

Technical details as well as weight specifications and measurements have been prepared with care. Errors excepted. All dimensions in mm · LED service life data: L80/B10 at ambient temperature (ta) 25°C. Rated lamp service life 50,000h. Luminous flux and efficiency specifications are subject to a tolerance of +/- 10%. Min CRI Ra: >80 / >90 · Product images are used as an example and may differ from the original · We reserve the right to make changes, insofar as they serve progress. The Single Lighting Regulation (SLR) documentation can be found in our download area. Oktalite Lichttechnik GmbH · Mathias-Brüggen-Str. 73 · 50829 Cologne · T 49 221 59767-0 · F 49 221 59767-40 · mail@oktalite.com · www.oktalite.com · 2022-11-29



Optic Limba - LED ^{IQ} DALI

oktalite

Optic 3D faceted reflectors
 Type interchangeable reflector system

Beam angle				Cover	LOR	Order number																							
Wide Flood						white	silver	black																					
<table border="1"> <thead> <tr> <th colspan="4">Limba - WFL</th> </tr> <tr> <th>Höhe [m]</th> <th>KegelØ [cm]</th> <th>E(0°) [lx/klm]</th> <th>E(C0) [lx/klm]</th> </tr> </thead> <tbody> <tr> <td>1</td> <td>87</td> <td>1437</td> <td>554</td> </tr> <tr> <td>2</td> <td>175</td> <td>359</td> <td>139</td> </tr> <tr> <td>3</td> <td>262</td> <td>160</td> <td>62</td> </tr> </tbody> </table>				Limba - WFL				Höhe [m]	KegelØ [cm]	E(0°) [lx/klm]	E(C0) [lx/klm]	1	87	1437	554	2	175	359	139	3	262	160	62		without	87 %	10186917	-	-
Limba - WFL																													
Höhe [m]	KegelØ [cm]	E(0°) [lx/klm]	E(C0) [lx/klm]																										
1	87	1437	554																										
2	175	359	139																										
3	262	160	62																										

Beam angle				Cover	LOR	Order number																							
Very Wide Flood						white	silver	black																					
<table border="1"> <thead> <tr> <th colspan="4">Limba - VFL</th> </tr> <tr> <th>Höhe [m]</th> <th>KegelØ [cm]</th> <th>E(0°) [lx/klm]</th> <th>E(C0) [lx/klm]</th> </tr> </thead> <tbody> <tr> <td>1</td> <td>117</td> <td>1027</td> <td>333</td> </tr> <tr> <td>2</td> <td>235</td> <td>257</td> <td>83</td> </tr> <tr> <td>3</td> <td>352</td> <td>114</td> <td>37</td> </tr> </tbody> </table>				Limba - VFL				Höhe [m]	KegelØ [cm]	E(0°) [lx/klm]	E(C0) [lx/klm]	1	117	1027	333	2	235	257	83	3	352	114	37		without	87 %	10186918	-	-
Limba - VFL																													
Höhe [m]	KegelØ [cm]	E(0°) [lx/klm]	E(C0) [lx/klm]																										
1	117	1027	333																										
2	235	257	83																										
3	352	114	37																										

Technical details as well as weight specifications and measurements have been prepared with care. Errors excepted. All dimensions in mm · LED service life data: L80/B10 at ambient temperature (ta) 25°C. Rated lamp service life 50,000h. Luminous flux and efficiency specifications are subject to a tolerance of +/- 10%. Min CRI Ra: >80 / >90 · Product images are used as an example and may differ from the original · We reserve the right to make changes, insofar as they serve progress. The Single Lighting Regulation (SLR) documentation can be found in our download area. Oktalite Lichttechnik GmbH · Mathias-Brüggen-Str. 73 · 50829 Cologne · T 49 221 59767-0 · F 49 221 59767-40 · mail@oktalite.com · www.oktalite.com · 2022-11-29