



# QUIRA PLUS

RECESSED LUMINAIRE

QUIRA PLUS: for this recessed luminaire, lighting comfort and performance are things to be taken for granted. QUIRA PLUS can be swivelled in to accentuate the merchandise in the sales room and at the same time it remains flush with the ceiling. And swivelled out, QUIRA PLUS reaches every high-level decoration with pinpoint accuracy. Optionally fitted with the ACTIVE LED module. This makes the precise adjustment of the light possible as regards intensity and colour temperature.



**Genuine power package**

Lumen packages up to 5,000 lm



**Ideal application range**

Optimum use in the case of great ceiling heights.



**Well thought-out fastening**

Our own development for ease of installation



**Well protected**

Optional glass cover to protect from dirt

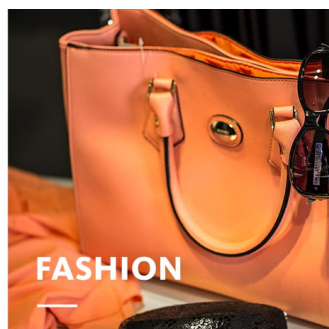


**Optimum visual comfort**

Black front ring for optimum glare suppression



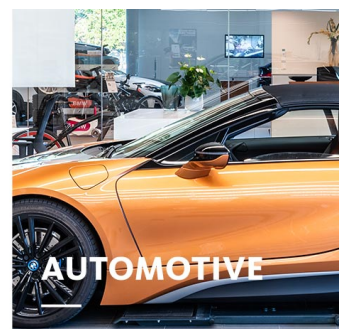
FOOD



FASHION



SHOP



AUTOMOTIVE

# QUIRA PLUS

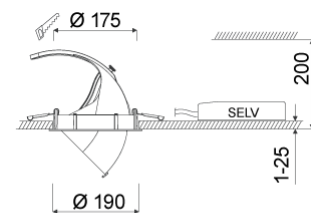
# oktalite

[www.oktalite.com/quira-plus-r](http://www.oktalite.com/quira-plus-r)




Type of luminaire	recessed luminaire
Application areas	Accent lighting, High-level decoration
Pan/tilt range	Rotates through 355°, swivels through 85° (15° inwards, 70° outwards)
Mounting	Okталite folding spring
Ceiling thickness	1 - 25 mm
Lighting technology	LED <sup>IQ</sup> DALI
LED Luminous Flux Class	3000 lm - 7000 lm
Light colour White	2700 K, 3000 K, 3000 K - Efficient White, 3000 K - Brilliant Colour, 3500 K, 4000 K, 4000 K - Efficient Cool, Active 2700-6000 K
Light colour Food*	M, M+F, BF
Cooling	passive
Supply unit	DALI driver separate
Luminaire colour	RAL 9005 jet black



	RAL 9006 white aluminium
	RAL 9016 traffic white
	Special colours on request
Surface	structure powder-coated
Nominal voltage	220 - 240 V, 50/60Hz
Lighting controls	DALI DT6, DALI DT8 (Active)
Installation	Recommended for new installation.
Weight	Approx. 1.3 kg



Components

-  Luminaire housing
-  Optic
-  Supply unit

Test seal



\* M = Meat,  
M = Meat, F = Fish,  
BF = Brilliant Food

Technical details as well as weight specifications and measurements have been prepared with care. Errors excepted. All dimensions in mm · LED service life data: L80/B10 at ambient temperature (ta) 25°C. Rated lamp service life 50,000h. Luminous flux and efficiency specifications are subject to a tolerance of +/- 10%. Min CRI Ra: >80 / >90 · Product images are used as an example and may differ from the original · We reserve the right to make changes, insofar as they serve progress. The Single Lighting Regulation (SLR) documentation can be found in our download area. Okталite Lichttechnik GmbH · Mathias-Brüggen-Str. 73 · 50829 Cologne · T 49 221 59767-0 · F 49 221 59767-40 · mail@okталite.com · www.okталite.com · 2022-11-29

**QUIRA PLUS****oktalite**

LED Luminous Flux Class	Light colour	CRI R <sub>a</sub>	system luminous flux*	System performance	Order number		
					white	silver	black
4000 lm	3000 K - Brilliant Colour	97	3825 lm	46 W	10196948	10196949	10196950
5000 lm	2700 K	81	4460 lm	36 W	10196951	10196952	10196953
	3000 K - Efficient White	94	4835 lm	46 W	10196957	10196958	10196959
	3500 K	84	4675 lm	36 W	10196960	10196961	10196962
	4000 K - Efficient Cool	91	5120 lm	46 W	10249728	10249729	10249730
7000 lm	3000 K	80	6880 lm	54 W	10260563	10260564	10260565
	4000 K	80	7270 lm	54 W	10260566	10260567	10260568
3000 lm	M	-	2790 lm	46 W	10196939	10196940	10196941
	M+F	-	2595 lm	46 W	10196942	10196943	10196944
4000 lm	BF	-	3525 lm	40 W	10213492	10213493	10213494
3000 lm	Active 2700-6000 K	-	-	36 W	10211066	10211067	10211068
	2700 K	83	2565 lm				
	6000 K	87	2865 lm				

**Accessories****Order number**

Oktalite folding spring

10213714

\* System luminous flux based on medium flood reflector.

Efficient White: R<sub>s</sub> = 75, R<sub>f</sub> = 91, R<sub>g</sub> = 102Brilliant Colour: R<sub>s</sub> = 94, R<sub>f</sub> = 95, R<sub>g</sub> = 104

Technical details as well as weight specifications and measurements have been prepared with care. Errors excepted. All dimensions in mm · LED service life data: L80/B10 at ambient temperature (ta) 25°C. Rated lamp service life 50,000h. Luminous flux and efficiency specifications are subject to a tolerance of +/- 10%. Min CRI Ra: >80 / >90 · Product images are used as an example and may differ from the original · We reserve the right to make changes, insofar as they serve progress. The Single Lighting Regulation (SLR) documentation can be found in our download area. Oktalite Lichttechnik GmbH · Mathias-Brüggen-Str. 73 · 50829 Cologne · T 49 221 59767-0 · F 49 221 59767-40 · mail@oktalite.com · www.oktalite.com · 2022-11-29



Optic - LED IQ DALI

# Optic QUIRA PLUS - LED IQ DALI

# oktalite

Optic 3D facetted reflectors  
Type interchangeable reflector system

Beam angle				Cover	LOR	Order number																		
Spot						white	silver	black																
<b>Quira Plus - SP</b> <table border="1"> <thead> <tr> <th>Höhe [m]</th> <th>KegelØ [cm]</th> <th>E(0°) [lx/klm]</th> <th>E(C0) [lx/klm]</th> </tr> </thead> <tbody> <tr> <td>1</td> <td>24</td> <td>6842</td> <td>3367</td> </tr> <tr> <td>2</td> <td>48</td> <td>1711</td> <td>842</td> </tr> <tr> <td>3</td> <td>73</td> <td>760</td> <td>374</td> </tr> </tbody> </table>				Höhe [m]	KegelØ [cm]	E(0°) [lx/klm]	E(C0) [lx/klm]	1	24	6842	3367	2	48	1711	842	3	73	760	374	without	87 %	-	-	10196971
Höhe [m]	KegelØ [cm]	E(0°) [lx/klm]	E(C0) [lx/klm]																					
1	24	6842	3367																					
2	48	1711	842																					
3	73	760	374																					
				clear	83 %	-	-	10196966																

Beam angle				Cover	LOR	Order number																		
Medium Flood						white	silver	black																
<b>Quira Plus - MF</b> <table border="1"> <thead> <tr> <th>Höhe [m]</th> <th>KegelØ [cm]</th> <th>E(0°) [lx/klm]</th> <th>E(C0) [lx/klm]</th> </tr> </thead> <tbody> <tr> <td>1</td> <td>43</td> <td>3357</td> <td>1573</td> </tr> <tr> <td>2</td> <td>85</td> <td>839</td> <td>393</td> </tr> <tr> <td>3</td> <td>128</td> <td>373</td> <td>175</td> </tr> </tbody> </table>				Höhe [m]	KegelØ [cm]	E(0°) [lx/klm]	E(C0) [lx/klm]	1	43	3357	1573	2	85	839	393	3	128	373	175	without	88 %	-	-	10196972
Höhe [m]	KegelØ [cm]	E(0°) [lx/klm]	E(C0) [lx/klm]																					
1	43	3357	1573																					
2	85	839	393																					
3	128	373	175																					
				clear	84 %	-	-	10196967																

Beam angle				Cover	LOR	Order number																		
Flood						white	silver	black																
<b>Quira Plus - FL</b> <table border="1"> <thead> <tr> <th>Höhe [m]</th> <th>KegelØ [cm]</th> <th>E(0°) [lx/klm]</th> <th>E(C0) [lx/klm]</th> </tr> </thead> <tbody> <tr> <td>1</td> <td>66</td> <td>1981</td> <td>857</td> </tr> <tr> <td>2</td> <td>132</td> <td>495</td> <td>214</td> </tr> <tr> <td>3</td> <td>197</td> <td>220</td> <td>95</td> </tr> </tbody> </table>				Höhe [m]	KegelØ [cm]	E(0°) [lx/klm]	E(C0) [lx/klm]	1	66	1981	857	2	132	495	214	3	197	220	95	without	87 %	-	-	10196973
Höhe [m]	KegelØ [cm]	E(0°) [lx/klm]	E(C0) [lx/klm]																					
1	66	1981	857																					
2	132	495	214																					
3	197	220	95																					
				clear	83 %	-	-	10196968																

Technical details as well as weight specifications and measurements have been prepared with care. Errors excepted. All dimensions in mm · LED service life data: L80/B10 at ambient temperature (ta) 25°C. Rated lamp service life 50,000h. Luminous flux and efficiency specifications are subject to a tolerance of +/- 10%. Min CRI Ra: >80 / >90· Product images are used as an example and may differ from the original · We reserve the right to make changes, insofar as they serve progress. The Single Lighting Regulation (SLR) documentation can be found in our download area. Oktalite Lichttechnik GmbH · Mathias-Brüggen-Str. 73 · 50829 Cologne · T 49 221 59767-0 · F 49 221 59767-40 · mail@oktalite.com · www.oktalite.com · 2022-11-29



Optic - LED <sup>IQ</sup> DALI

# Optic QUIRA PLUS - LED <sup>IQ</sup> DALI

# oktalite

Optic 3D faceted reflectors  
Type interchangeable reflector system

Beam angle				Cover	LOR	Order number																						
Wide Flood						white	silver	black																				
<table border="1"> <thead> <tr> <th colspan="4">Quira Plus - WFL</th> </tr> <tr> <th>Höhe [m]</th> <th>KegelØ [cm]</th> <th>E(0°) [lx/klm]</th> <th>E(C0) [lx/klm]</th> </tr> </thead> <tbody> <tr> <td>1</td> <td>87</td> <td>1437</td> <td>554</td> </tr> <tr> <td>2</td> <td>175</td> <td>359</td> <td>139</td> </tr> <tr> <td>3</td> <td>262</td> <td>160</td> <td>62</td> </tr> </tbody> </table>				Quira Plus - WFL				Höhe [m]	KegelØ [cm]	E(0°) [lx/klm]	E(C0) [lx/klm]	1	87	1437	554	2	175	359	139	3	262	160	62					
Quira Plus - WFL																												
Höhe [m]	KegelØ [cm]	E(0°) [lx/klm]	E(C0) [lx/klm]																									
1	87	1437	554																									
2	175	359	139																									
3	262	160	62																									
				without	87 %	-	-	10196974																				
				clear	83 %	-	-	10196969																				

Beam angle				Cover	LOR	Order number																						
Very Wide Flood						white	silver	black																				
<table border="1"> <thead> <tr> <th colspan="4">Quira Plus - VFL</th> </tr> <tr> <th>Höhe [m]</th> <th>KegelØ [cm]</th> <th>E(0°) [lx/klm]</th> <th>E(C0) [lx/klm]</th> </tr> </thead> <tbody> <tr> <td>1</td> <td>117</td> <td>1027</td> <td>333</td> </tr> <tr> <td>2</td> <td>235</td> <td>257</td> <td>83</td> </tr> <tr> <td>3</td> <td>352</td> <td>114</td> <td>37</td> </tr> </tbody> </table>				Quira Plus - VFL				Höhe [m]	KegelØ [cm]	E(0°) [lx/klm]	E(C0) [lx/klm]	1	117	1027	333	2	235	257	83	3	352	114	37					
Quira Plus - VFL																												
Höhe [m]	KegelØ [cm]	E(0°) [lx/klm]	E(C0) [lx/klm]																									
1	117	1027	333																									
2	235	257	83																									
3	352	114	37																									
				without	87 %	-	-	10196975																				
				clear	83 %	-	-	10196970																				

Technical details as well as weight specifications and measurements have been prepared with care. Errors excepted. All dimensions in mm · LED service life data: L80/B10 at ambient temperature (ta) 25°C. Rated lamp service life 50,000h. Luminous flux and efficiency specifications are subject to a tolerance of +/- 10%. Min CRI Ra: >80 / >90· Product images are used as an example and may differ from the original · We reserve the right to make changes, insofar as they serve progress. The Single Lighting Regulation (SLR) documentation can be found in our download area. Oktalite Lichttechnik GmbH · Mathias-Brüggen-Str. 73 · 50829 Cologne · T 49 221 59767-0 · F 49 221 59767-40 · mail@oktalite.com · www.oktalite.com · 2022-11-29



Supply unit - LED<sup>IQ</sup> DALI

## DALI driver

# oktalite

Version	Independent control gear
Connection type	Pre-wired plug-in connectivity
Mains connection	GST 18i3
Cable length secondary	400 mm
Nominal voltage	220 - 240 V, 50/60Hz
protection	IP20
protection class	I, II
Lighting controls	DALI DT6, DALI DT8 (Active)
Lighting technology	LED <sup>IQ</sup> DALI

Lighting technology	Luminaire connection	Output	System performance	max. luminaires B16	Order number
LED IQ DALI	RNV	950 mA	36 W	60	10261333
LED IQ DALI	R4L (Active)	900 mA	36 W	16	10211596
LED IQ DALI	RNV	1050 mA	40 W	60	10264905
LED IQ DALI	RNV	1200 mA	46 W	20	10185643
LED IQ DALI	RNV	950 mA	54 W	30	10260618

Technical details as well as weight specifications and measurements have been prepared with care. Errors excepted. All dimensions in mm · LED service life data: L80/B10 at ambient temperature (ta) 25°C. Rated lamp service life 50,000h. Luminous flux and efficiency specifications are subject to a tolerance of +/- 10%. Min CRI Ra: >80 / >90 · Product images are used as an example and may differ from the original · We reserve the right to make changes, insofar as they serve progress. The Single Lighting Regulation (SLR) documentation can be found in our download area. Oktalite Lichttechnik GmbH · Mathias-Brüggen-Str. 73 · 50829 Cologne · T 49 221 59767-0 · F 49 221 59767-40 · mail@oktalite.com · www.oktalite.com · 2022-11-29