



QUIRA

RECESSED LUMINAIRE

QUIRA - the recessed luminaire with impressive characteristics: top-performing and, with two sizes, extremely flexible. QUIRA can be swivelled in to accentuate the merchandise in the salesroom and at the same time it remains flush with the ceiling. And swivelled out, QUIRA reaches every high-level decoration with pin-point accuracy. Optionally fitted with the ACTIVE LED module. This makes the precise adjustment of the light possible as regards intensity and colour temperature



Calm ceiling appearance

QUIRA tilted in can be used as a downlight



Almost invisible

Can be tilted in through up to 15°



Well thought-out fastening

Our own development for ease of installation



Two sizes

Installation diameters of 130 mm and 155 mm simplify modernisation in the case of existing ceiling cutouts

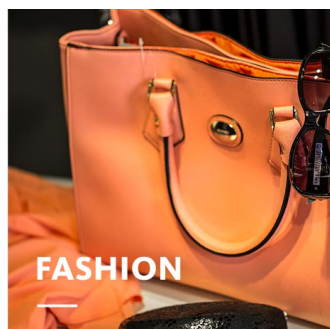


Intelligent light

Smart lighting management optionally with control line or wireless



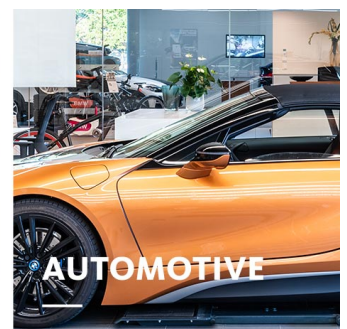
FOOD



FASHION



SHOP



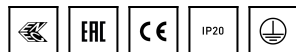
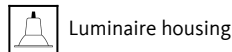
AUTOMOTIVE

QUIRA

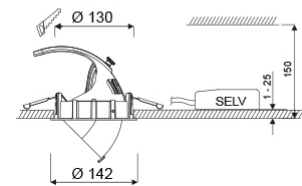
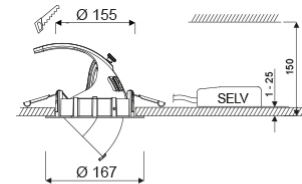
oktalite

www.oktalite.com/quira-r

Type of luminaire	recessed luminaire
Application areas	Accent lighting, High-level decoration
Pan/tilt range	Rotates through 355°, swivels through 85° (15° inwards, 70° outwards)
Mounting	Okталite folding spring
Ceiling thickness	1 - 25 mm
Lighting technology	LED ^{IQ} DALI
LED Luminous Flux Class	2000 lm - 4000 lm
Light colour White	2700 K, 3000 K, 3000 K - Efficient White, 3000 K - Brilliant Colour, 3500 K, 4000 K, 4000 K - Efficient Cool, Active 2700-6000 K
Light colour Food*	M, M+F, BF
Cooling	passive
Supply unit	DALI driver separate
Luminaire colour	RAL 9005 jet black RAL 9006 white aluminium RAL 9016 traffic white Special colours on request
Surface	structure powder-coated
Nominal voltage	220 - 240 V, 50/60Hz
Lighting controls	DALI DT6, DALI DT8 (Active)
Installation	Recommended for new installation.
Weight	Approx. 0.7 kg
Components	
Test seal	



* M = Meat,
M = Meat, F = Fish,
BF = Brilliant Food



Technical details as well as weight specifications and measurements have been prepared with care. Errors excepted. All dimensions in mm · LED service life data: L80/B10 at ambient temperature (ta) 25°C. Rated lamp service life 50,000h. Luminous flux and efficiency specifications are subject to a tolerance of /- 10%. Min CRI Ra: >80 / >90· Product images are used as an example and may differ from the original · We reserve the right to make changes, insofar as they serve progress. The Single Lighting Regulation (SLR) documentation can be found in our download area. Okталite Lichttechnik GmbH · Mathias-Brüggen-Str. 73 · 50829 Cologne · T 49 221 59767-0 · F 49 221 59767-40 · mail@okталite.com · www.okталite.com · 2022-11-29



QUIRA

oktalite

LED Luminous Flux Class	Light colour	CRI R _a	system luminous flux*	System performance	Ceiling cut-out	Order number			
						white	silver	black	
3000 lm	3000 K - Brilliant Colour	97	2575 lm	35 W	130 mm	10232527	10232528	10232529	
	3000 K - Brilliant Colour	97	2575 lm	35 W	155 mm	10241794	10241795	10241796	
4000 lm	2700 K	81	3305 lm	31 W	130 mm	10232512	10232513	10232514	
	2700 K	81	3305 lm	31 W	155 mm	10241779	10241780	10241781	
	3000 K	83	3440 lm	31 W	130 mm	10232515	10232516	10232517	
	3000 K	83	3440 lm	31 W	155 mm	10241782	10241783	10241784	
	3000 K - Efficient White	94	3385 lm	37 W	130 mm	10232518	10232519	10232520	
	3000 K - Efficient White	94	3385 lm	37 W	155 mm	10241785	10241786	10241787	
	3500 K	84	3510 lm	31 W	130 mm	10232521	10232522	10232523	
	3500 K	84	3510 lm	31 W	155 mm	10241788	10241789	10241790	
	4000 K	83	3580 lm	31 W	130 mm	10232524	10232525	10232526	
	4000 K	83	3580 lm	31 W	155 mm	10241791	10241792	10241793	
	4000 K - Efficient Cool	91	3615 lm	37 W	130 mm	10249725	10249726	10249727	
	4000 K - Efficient Cool	91	3615 lm	37 W	155 mm	10252813	10252814	10252815	
	2000 lm	M	-	1670 lm	31 W	130 mm	10232506	10232507	10232508
		M	-	1670 lm	31 W	155 mm	10241773	10241774	10241775
M+F		-	1575 lm	31 W	130 mm	10232509	10232510	10232511	
M+F		-	1575 lm	31 W	155 mm	10241776	10241777	10241778	
3000 lm	BF	98	2440 lm	31 W	130 mm	10232530	10232531	10232532	
	BF	98	2440 lm	31 W	155 mm	10241797	10241798	10241799	
2000 lm	Active 2700-6000 K	-	-	28 W	130 mm	10235797	10235798	10235799	
	Active 2700-6000 K	-	-	28 W	155 mm	10241800	10241801	10241803	
	2700 K	83	1670 lm						
	6000 K	87	1920 lm						

* System luminous flux based on medium flood reflector.



Efficient White: R_s = 75, R_t = 91, R_z = 102



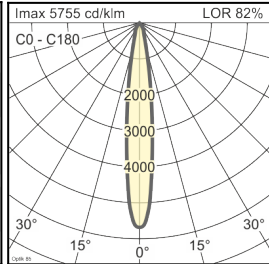
Brilliant Colour: R_s = 94, R_t = 95, R_z = 104

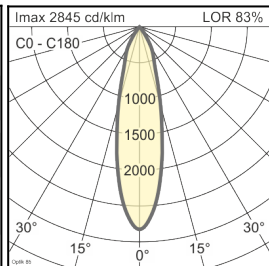
Technical details as well as weight specifications and measurements have been prepared with care. Errors excepted. All dimensions in mm · LED service life data: L80/B10 at ambient temperature (ta) 25°C. Rated lamp service life 50,000h. Luminous flux and efficiency specifications are subject to a tolerance of +/- 10%. Min CRI Ra: >80 / >90 · Product images are used as an example and may differ from the original · We reserve the right to make changes, insofar as they serve progress. The Single Lighting Regulation (SLR) documentation can be found in our download area. Oktalite Lichttechnik GmbH · Mathias-Brüggen-Str. 73 · 50829 Cologne · T 49 221 59767-0 · F 49 221 59767-40 · mail@oktalite.com · www.oktalite.com · 2022-11-29

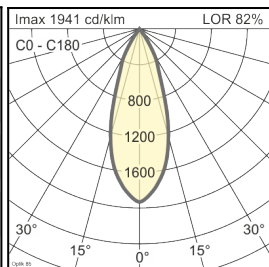
Optic QUIRA - LED^{IQ} DALI

oktalite

Optic 3D faceted reflectors
 Type interchangeable reflector system

Beam angle				Cover	LOR	Order number																		
Spot						white	silver	black																
Optik 85 - SP				without	82 %	-	-	10183944																
<table border="1"> <thead> <tr> <th>Höhe [m]</th> <th>KegelØ [cm]</th> <th>E(0°) [lx/klm]</th> <th>E(C0) [lx/klm]</th> </tr> </thead> <tbody> <tr> <td>1</td> <td>26</td> <td>5755</td> <td>2841</td> </tr> <tr> <td>2</td> <td>52</td> <td>1439</td> <td>710</td> </tr> <tr> <td>3</td> <td>78</td> <td>639</td> <td>316</td> </tr> </tbody> </table>				Höhe [m]	KegelØ [cm]	E(0°) [lx/klm]	E(C0) [lx/klm]	1	26	5755	2841	2	52	1439	710	3	78	639	316	clear	78 %	-	-	10184576
Höhe [m]	KegelØ [cm]	E(0°) [lx/klm]	E(C0) [lx/klm]																					
1	26	5755	2841																					
2	52	1439	710																					
3	78	639	316																					
																								

Beam angle				Cover	LOR	Order number																		
Medium Flood						white	silver	black																
Optik 85 - MF				without	83 %	-	-	10183959																
<table border="1"> <thead> <tr> <th>Höhe [m]</th> <th>KegelØ [cm]</th> <th>E(0°) [lx/klm]</th> <th>E(C0) [lx/klm]</th> </tr> </thead> <tbody> <tr> <td>1</td> <td>45</td> <td>2845</td> <td>1321</td> </tr> <tr> <td>2</td> <td>91</td> <td>711</td> <td>330</td> </tr> <tr> <td>3</td> <td>136</td> <td>316</td> <td>147</td> </tr> </tbody> </table>				Höhe [m]	KegelØ [cm]	E(0°) [lx/klm]	E(C0) [lx/klm]	1	45	2845	1321	2	91	711	330	3	136	316	147	clear	79 %	-	-	10184577
Höhe [m]	KegelØ [cm]	E(0°) [lx/klm]	E(C0) [lx/klm]																					
1	45	2845	1321																					
2	91	711	330																					
3	136	316	147																					
																								

Beam angle				Cover	LOR	Order number																		
Flood						white	silver	black																
Optik 85 - FL				without	82 %	-	-	10183953																
<table border="1"> <thead> <tr> <th>Höhe [m]</th> <th>KegelØ [cm]</th> <th>E(0°) [lx/klm]</th> <th>E(C0) [lx/klm]</th> </tr> </thead> <tbody> <tr> <td>1</td> <td>66</td> <td>1941</td> <td>832</td> </tr> <tr> <td>2</td> <td>132</td> <td>485</td> <td>208</td> </tr> <tr> <td>3</td> <td>197</td> <td>216</td> <td>92</td> </tr> </tbody> </table>				Höhe [m]	KegelØ [cm]	E(0°) [lx/klm]	E(C0) [lx/klm]	1	66	1941	832	2	132	485	208	3	197	216	92	clear	78 %	-	-	10184578
Höhe [m]	KegelØ [cm]	E(0°) [lx/klm]	E(C0) [lx/klm]																					
1	66	1941	832																					
2	132	485	208																					
3	197	216	92																					
																								

Technical details as well as weight specifications and measurements have been prepared with care. Errors excepted. All dimensions in mm · LED service life data: L80/B10 at ambient temperature (ta) 25°C. Rated lamp service life 50,000h. Luminous flux and efficiency specifications are subject to a tolerance of +/- 10%. Min CRI Ra: >80 / >90 · Product images are used as an example and may differ from the original · We reserve the right to make changes, insofar as they serve progress. The Single Lighting Regulation (SLR) documentation can be found in our download area. Oktalite Lichttechnik GmbH · Mathias-Brüggen-Str. 73 · 50829 Cologne · T 49 221 59767-0 · F 49 221 59767-40 · mail@oktalite.com · www.oktalite.com · 2022-11-29



Optic QUIRA - LED^{IQ} DALI

oktalite

Optic 3D faceted reflectors
 Type interchangeable reflector system

Beam angle				Cover	LOR	Order number																											
Wide Flood						white	silver	black																									
<table border="1"> <thead> <tr> <th colspan="4">Optik 85 - WFL</th> </tr> <tr> <th>Höhe [m]</th> <th>KegelØ [cm]</th> <th>E(0°) [lx/klm]</th> <th>E(C0) [lx/klm]</th> </tr> </thead> <tbody> <tr> <td>1</td> <td>83</td> <td>1522</td> <td>601</td> </tr> <tr> <td>2</td> <td>167</td> <td>381</td> <td>150</td> </tr> <tr> <td>3</td> <td>250</td> <td>169</td> <td>67</td> </tr> </tbody> </table>				Optik 85 - WFL				Höhe [m]	KegelØ [cm]	E(0°) [lx/klm]	E(C0) [lx/klm]	1	83	1522	601	2	167	381	150	3	250	169	67						without	82 %	-	-	10183954
Optik 85 - WFL																																	
Höhe [m]	KegelØ [cm]	E(0°) [lx/klm]	E(C0) [lx/klm]																														
1	83	1522	601																														
2	167	381	150																														
3	250	169	67																														
				clear	78 %	-	-	10184579																									

Beam angle				Cover	LOR	Order number																											
Very Wide Flood						white	silver	black																									
<table border="1"> <thead> <tr> <th colspan="4">Optik 85 - VFL</th> </tr> <tr> <th>Höhe [m]</th> <th>KegelØ [cm]</th> <th>E(0°) [lx/klm]</th> <th>E(C0) [lx/klm]</th> </tr> </thead> <tbody> <tr> <td>1</td> <td>111</td> <td>1067</td> <td>360</td> </tr> <tr> <td>2</td> <td>223</td> <td>267</td> <td>90</td> </tr> <tr> <td>3</td> <td>334</td> <td>119</td> <td>40</td> </tr> </tbody> </table>				Optik 85 - VFL				Höhe [m]	KegelØ [cm]	E(0°) [lx/klm]	E(C0) [lx/klm]	1	111	1067	360	2	223	267	90	3	334	119	40						without	82 %	-	-	10183955
Optik 85 - VFL																																	
Höhe [m]	KegelØ [cm]	E(0°) [lx/klm]	E(C0) [lx/klm]																														
1	111	1067	360																														
2	223	267	90																														
3	334	119	40																														
				clear	78 %	-	-	10184580																									

Technical details as well as weight specifications and measurements have been prepared with care. Errors excepted. All dimensions in mm · LED service life data: L80/B10 at ambient temperature (ta) 25°C. Rated lamp service life 50,000h. Luminous flux and efficiency specifications are subject to a tolerance of +/- 10%. Min CRI Ra: >80 / >90· Product images are used as an example and may differ from the original · We reserve the right to make changes, insofar as they serve progress. The Single Lighting Regulation (SLR) documentation can be found in our download area. Oktalite Lichttechnik GmbH · Mathias-Brüggen-Str. 73 · 50829 Cologne · T 49 221 59767-0 · F 49 221 59767-40 · mail@oktalite.com · www.oktalite.com · 2022-11-29



Supply unit - LED^{IQ} DALI

DALI driver

oktalite

Version	Independent control gear
Connection type	Pre-wired plug-in connectivity
Mains connection	GST 18i3
Cable length secondary	400 mm
Nominal voltage	220 - 240 V, 50/60Hz
protection	IP20
protection class	I, II
Lighting controls	DALI DT6, DALI DT8 (Active)
Lighting technology	LED ^{IQ} DALI

Lighting technology	Luminaire connection	Output	System performance	max. luminaires B16	Order number
LED IQ DALI	R4L (Active)	700 mA	28 W	16	10243042
LED IQ DALI	RNV	800 mA	31 W	60	10264902
LED IQ DALI	RNV	900 mA	35 W	60	10264904
LED IQ DALI	RNV	950 mA	37 W	60	10261333

Technical details as well as weight specifications and measurements have been prepared with care. Errors excepted. All dimensions in mm · LED service life data: L80/B10 at ambient temperature (ta) 25°C. Rated lamp service life 50,000h. Luminous flux and efficiency specifications are subject to a tolerance of +/- 10%. Min CRI Ra: >80 / >90 · Product images are used as an example and may differ from the original · We reserve the right to make changes, insofar as they serve progress. The Single Lighting Regulation (SLR) documentation can be found in our download area. Oktalite Lichttechnik GmbH · Mathias-Brüggen-Str. 73 · 50829 Cologne · T 49 221 59767-0 · F 49 221 59767-40 · mail@oktalite.com · www.oktalite.com · 2022-11-29