



TARO MINI TRACK

TRACK LIGHT

With TARO MINI TRACK, we supplement our portfolio with the addition of a striking LED track-mounted spotlight with track drivers of the latest technical generation: compact, chic, at the same time extremely effective and easy to handle. The newcomer is also available as an LEDIQ BLE variant: perfect for uncomplicated lighting renovation with lighting fittings that can be controlled smartly via Bluetooth.



Striking spotlight with maximum performance
Light intense up to 4000 lm



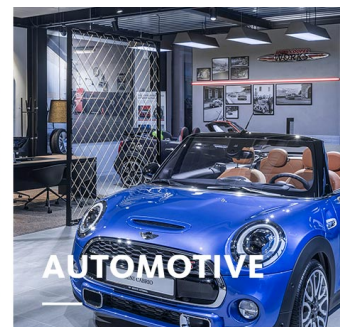
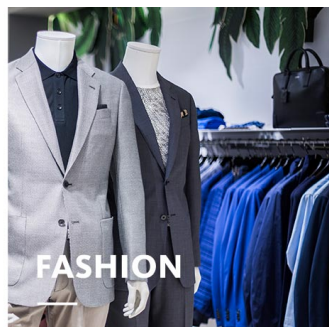
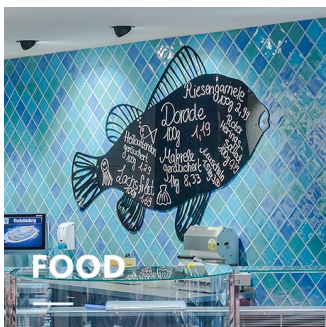
Filigrée technical equipment installed
Control system in the track driver of the power track



Full LED colour variety
Wide range with 6 LED white light colours



Intelligent lighting
LED^{IQ} BLE for your smart lighting management



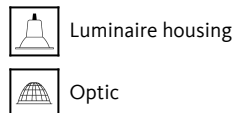
TARO MINI TRACK

oktalite

www.oktalite.com/taro-mini-track-t

Type of luminaire	track light
Application areas	Accent lighting
Pan/tilt range	355° turning range, 180° swivel range
Mounting	3P Power Track, not suitable for vertical mounting
Lighting technology	LED ^{IQ} BLE
LED Luminous Flux Class	3000 lm - 4000 lm
Light colour White	2700 K, 3000 K, 3000 K - Efficient White, 3000 K - Brilliant Colour, 3500 K, 4000 K, 4000 K - Efficient Cool
Light colour Food*	BF
Cooling	passive
Supply unit	BLE-Driver integrated
Luminaire colour	RAL 9005 jet black RAL 9016 traffic white Special colours on request
Surface	structure powder-coated
Nominal voltage	220 - 240 V, 50/60Hz
Lighting controls	Bluetooth Low Energy
Installation	Recommended for modernization or new installation. In a BLE network up to 127 luminaires can be coupled. A stable Bluetooth connection depends on the particular local situation. In the case of this luminaire type it amounts to up to 25 m.
Weight	Approx. 0.9 kg

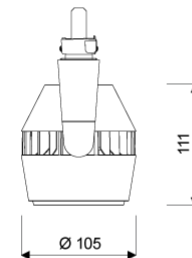
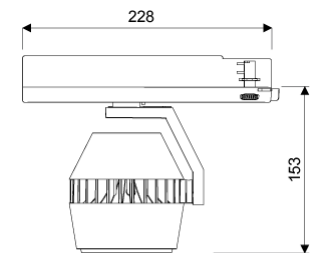
Components



Test seal



* BF = Brilliant Food



Technical details as well as weight specifications and measurements have been prepared with care. Errors excepted. All dimensions in mm · LED service life data: L80/B10 at ambient temperature (ta) 25°C. Rated lamp service life 50,000h. Luminous flux and efficiency specifications are subject to a tolerance of +/- 10%. Min CRI Ra: >80 / >90· Product images are used as an example and may differ from the original · We reserve the right to make changes, insofar as they serve progress. The Single Lighting Regulation (SLR) documentation can be found in our download area. Oktalite Lichttechnik GmbH · Mathias-Brüggen-Str. 73 · 50829 Cologne · T 49 221 59767-0 · F 49 221 59767-40 · mail@oktalite.com · www.oktalite.com · 2022-11-29

**TARO MINI TRACK****oktalite**

LED Luminous Flux Class	Light colour	CRI R _a	system luminous flux*	System performance	max. luminaires B16	Order number		
						white	silver	black
3000 lm	3000 K - Brilliant Colour	97	2790 lm	35 W	50	10247822		10247823
4000 lm	2700 K	81	3575 lm	31 W	50	10247824		10247825
	3000 K	83	3725 lm	31 W	50	10247826		10247827
	3000 K - Efficient White	94	3670 lm	37 W	50	10247828		10247829
	3500 K	84	3800 lm	31 W	50	10247830		10247831
	4000 K	83	3875 lm	31 W	50	10247832		10247833
	4000 K - Efficient Cool	91	3925 lm	37 W	50	10249764		10249765
3000 lm	BF	98	2640 lm	31 W	50	10247834		10247835

* System luminous flux based on medium flood reflector.

Efficient White: R_s = 75, R_r = 91, R_g = 102Brilliant Colour: R_s = 94, R_r = 95, R_g = 104

Technical details as well as weight specifications and measurements have been prepared with care. Errors excepted. All dimensions in mm · LED service life data: L80/B10 at ambient temperature (ta) 25°C. Rated lamp service life 50,000h. Luminous flux and efficiency specifications are subject to a tolerance of /- 10%. Min CRI Ra: >80 / >90· Product images are used as an example and may differ from the original · We reserve the right to make changes, insofar as they serve progress. The Single Lighting Regulation (SLR) documentation can be found in our download area. Oktalite Lichttechnik GmbH · Mathias-Brüggen-Str. 73 · 50829 Cologne · T 49 221 59767-0 · F 49 221 59767-40 · mail@oktalite.com · www.oktalite.com · 2022-11-29

Optic Taro Mini - LED IQ BLE

oktalite

Optic 3D faceted reflectors
Type interchangeable reflector system

Beam angle				Cover	LOR	Order number																		
Spot						white	silver	black																
Taro Mini - SP <table border="1"> <thead> <tr> <th>Höhe [m]</th> <th>KegelØ [cm]</th> <th>E(0°) [lx/klm]</th> <th>E(C0) [lx/klm]</th> </tr> </thead> <tbody> <tr> <td>1</td> <td>26</td> <td>5853</td> <td>2896</td> </tr> <tr> <td>2</td> <td>51</td> <td>1463</td> <td>724</td> </tr> <tr> <td>3</td> <td>77</td> <td>650</td> <td>322</td> </tr> </tbody> </table>				Höhe [m]	KegelØ [cm]	E(0°) [lx/klm]	E(C0) [lx/klm]	1	26	5853	2896	2	51	1463	724	3	77	650	322	without	86 %	10186769	-	10186771
Höhe [m]	KegelØ [cm]	E(0°) [lx/klm]	E(C0) [lx/klm]																					
1	26	5853	2896																					
2	51	1463	724																					
3	77	650	322																					
Beam angle				Cover	LOR	Order number																		
Medium Flood						white	silver	black																
Taro Mini - MF <table border="1"> <thead> <tr> <th>Höhe [m]</th> <th>KegelØ [cm]</th> <th>E(0°) [lx/klm]</th> <th>E(C0) [lx/klm]</th> </tr> </thead> <tbody> <tr> <td>1</td> <td>46</td> <td>2805</td> <td>1308</td> </tr> <tr> <td>2</td> <td>92</td> <td>701</td> <td>327</td> </tr> <tr> <td>3</td> <td>137</td> <td>312</td> <td>145</td> </tr> </tbody> </table>				Höhe [m]	KegelØ [cm]	E(0°) [lx/klm]	E(C0) [lx/klm]	1	46	2805	1308	2	92	701	327	3	137	312	145	without	87 %	10186772	-	10186774
Höhe [m]	KegelØ [cm]	E(0°) [lx/klm]	E(C0) [lx/klm]																					
1	46	2805	1308																					
2	92	701	327																					
3	137	312	145																					
Beam angle				Cover	LOR	Order number																		
Flood						white	silver	black																
Taro Mini - FL <table border="1"> <thead> <tr> <th>Höhe [m]</th> <th>KegelØ [cm]</th> <th>E(0°) [lx/klm]</th> <th>E(C0) [lx/klm]</th> </tr> </thead> <tbody> <tr> <td>1</td> <td>66</td> <td>1966</td> <td>850</td> </tr> <tr> <td>2</td> <td>132</td> <td>492</td> <td>212</td> </tr> <tr> <td>3</td> <td>197</td> <td>218</td> <td>94</td> </tr> </tbody> </table>				Höhe [m]	KegelØ [cm]	E(0°) [lx/klm]	E(C0) [lx/klm]	1	66	1966	850	2	132	492	212	3	197	218	94	without	86 %	10186775	-	10186777
Höhe [m]	KegelØ [cm]	E(0°) [lx/klm]	E(C0) [lx/klm]																					
1	66	1966	850																					
2	132	492	212																					
3	197	218	94																					

Technical details as well as weight specifications and measurements have been prepared with care. Errors excepted. All dimensions in mm · LED service life data: L80/B10 at ambient temperature (ta) 25°C. Rated lamp service life 50,000h. Luminous flux and efficiency specifications are subject to a tolerance of +/- 10%. Min CRI Ra: >80 / >90 · Product images are used as an example and may differ from the original · We reserve the right to make changes, insofar as they serve progress. The Single Lighting Regulation (SLR) documentation can be found in our download area. Oktalite Lichttechnik GmbH · Mathias-Brüggen-Str. 73 · 50829 Cologne · T 49 221 59767-0 · F 49 221 59767-40 · mail@oktalite.com · www.oktalite.com · 2022-11-29

Optic Taro Mini - LED IQ BLE

oktalite

Optic 3D faceted reflectors
 Type interchangeable reflector system

Beam angle				Cover	LOR	Order number																						
Wide Flood						white	silver	black																				
<table border="1"> <thead> <tr> <th colspan="4">Taro Mini - WFL</th> </tr> <tr> <th>Höhe [m]</th> <th>KegelØ [cm]</th> <th>E(0°) [lx/klm]</th> <th>E(C0) [lx/klm]</th> </tr> </thead> <tbody> <tr> <td>1</td> <td>84</td> <td>1506</td> <td>590</td> </tr> <tr> <td>2</td> <td>169</td> <td>376</td> <td>148</td> </tr> <tr> <td>3</td> <td>253</td> <td>167</td> <td>66</td> </tr> </tbody> </table>				Taro Mini - WFL				Höhe [m]	KegelØ [cm]	E(0°) [lx/klm]	E(C0) [lx/klm]	1	84	1506	590	2	169	376	148	3	253	167	66	without	86 %	10186778	-	10186780
Taro Mini - WFL																												
Höhe [m]	KegelØ [cm]	E(0°) [lx/klm]	E(C0) [lx/klm]																									
1	84	1506	590																									
2	169	376	148																									
3	253	167	66																									

Beam angle				Cover	LOR	Order number																						
Very Wide Flood						white	silver	black																				
<table border="1"> <thead> <tr> <th colspan="4">Taro Mini - VFL</th> </tr> <tr> <th>Höhe [m]</th> <th>KegelØ [cm]</th> <th>E(0°) [lx/klm]</th> <th>E(C0) [lx/klm]</th> </tr> </thead> <tbody> <tr> <td>1</td> <td>114</td> <td>1064</td> <td>349</td> </tr> <tr> <td>2</td> <td>228</td> <td>266</td> <td>87</td> </tr> <tr> <td>3</td> <td>342</td> <td>118</td> <td>39</td> </tr> </tbody> </table>				Taro Mini - VFL				Höhe [m]	KegelØ [cm]	E(0°) [lx/klm]	E(C0) [lx/klm]	1	114	1064	349	2	228	266	87	3	342	118	39	without	86 %	10186781	-	10186783
Taro Mini - VFL																												
Höhe [m]	KegelØ [cm]	E(0°) [lx/klm]	E(C0) [lx/klm]																									
1	114	1064	349																									
2	228	266	87																									
3	342	118	39																									

Technical details as well as weight specifications and measurements have been prepared with care. Errors excepted. All dimensions in mm · LED service life data: L80/B10 at ambient temperature (ta) 25°C. Rated lamp service life 50,000h. Luminous flux and efficiency specifications are subject to a tolerance of +/- 10%. Min CRI Ra: >80 / >90 · Product images are used as an example and may differ from the original · We reserve the right to make changes, insofar as they serve progress. The Single Lighting Regulation (SLR) documentation can be found in our download area. Oktalite Lichttechnik GmbH · Mathias-Brüggen-Str. 73 · 50829 Cologne · T 49 221 59767-0 · F 49 221 59767-40 · mail@oktalite.com · www.oktalite.com · 2022-11-29