



TARO MINI TRACK

TRACK LIGHT

With TARO MINI TRACK, we supplement our portfolio with the addition of a striking LED track-mounted spotlight with track drivers of the latest technical generation: compact, chic, at the same time extremely effective and easy to handle. The newcomer is also available as an LEDIQ BLE variant: perfect for uncomplicated lighting renovation with lighting fittings that can be controlled smartly via Bluetooth.



Striking spotlight with maximum performance
Light intense up to 4000 lm



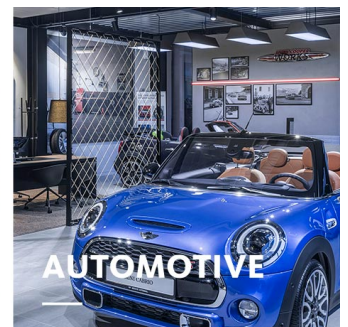
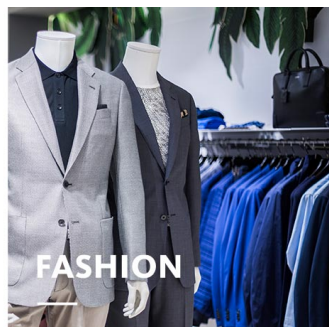
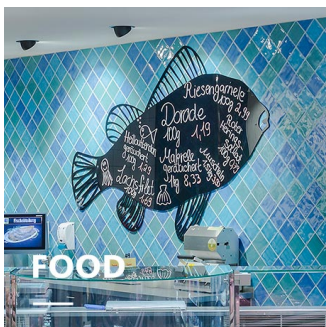
Filigrée technical equipment installed
Control system in the track driver of the power track



Full LED colour variety
Wide range with 6 LED white light colours









Intelligent lighting
LED^{IQ} BLE for your smart lighting management



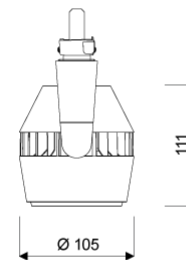
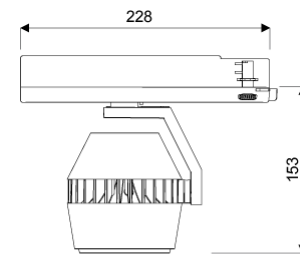
TARO MINI TRACK

oktalite

www.oktalite.com/taro-mini-track-t

Type of luminaire	track light
Application areas	Accent lighting
Pan/tilt range	355° turning range, 180° swivel range
Mounting	3P Power Track, not suitable for vertical mounting
Lighting technology	LED
LED Luminous Flux Class	2000 lm - 4000 lm
Light colour White	2700 K, 3000 K, 3000 K - Efficient White, 3000 K - Brilliant Colour, 3500 K, 4000 K, 4000 K - Efficient Cool
Light colour Food*	BF
Cooling	passive
Supply unit	Driver integrated
Luminaire colour	RAL 9005 jet black RAL 9016 traffic white Special colours on request
Surface	structure powder-coated
Nominal voltage	220 - 240 V, 50/60Hz
Lighting controls	on request
Weight	Approx. 0.9 kg
Components	 Luminaire housing  Optic
Test seal	   

* BF = Brilliant Food



Technical details as well as weight specifications and measurements have been prepared with care. Errors excepted. All dimensions in mm · LED service life data: L80/B10 at ambient temperature (ta) 25°C. Rated lamp service life 50,000h. Luminous flux and efficiency specifications are subject to a tolerance of /- 10%. Min CRI Ra: >80 / >90· Product images are used as an example and may differ from the original · We reserve the right to make changes, insofar as they serve progress. The Single Lighting Regulation (SLR) documentation can be found in our download area. Oktalite Lichttechnik GmbH · Mathias-Brüggen-Str. 73 · 50829 Cologne · T 49 221 59767-0 · F 49 221 59767-40 · mail@oktalite.com · www.oktalite.com · 2022-11-29

**TARO MINI TRACK****oktalite**

LED Luminous Flux Class	Light colour	CRI R _a	system luminous flux*	System performance	max. luminaires B16	Order number		
						white	silver	black
2000 lm	2700 K	81	1785 lm	13 W	27	10254734		10254735
	3000 K	83	1860 lm	13 W	27	10254736		10254737
	3000 K - Efficient White	94	2005 lm	17 W	27	10254728		10254729
	3000 K - Brilliant Colour	97	1885 lm	21 W	27	10254730		10254731
	3500 K	84	1895 lm	13 W	27	10254738		10254739
	4000 K	83	1935 lm	13 W	27	10254740		10254741
	4000 K - Efficient Cool	91	2145 lm	17 W	27	10254732		10254733
3000 lm	2700 K	81	2835 lm	23 W	27	10237843		10237844
	3000 K	83	2955 lm	23 W	27	10237845		10237846
	3000 K - Efficient White	94	2905 lm	27 W	27	10237847		10237848
	3000 K - Brilliant Colour	97	2790 lm	35 W	27	10237841		10237842
	3500 K	84	3015 lm	23 W	27	10237849		10237850
	4000 K	83	3075 lm	23 W	27	10237851		10237852
	4000 K - Efficient Cool	91	3105 lm	27 W	27	10262830		10262831
4000 lm	2700 K	81	3575 lm	31 W	27	10237853		10237854
	3000 K	83	3725 lm	31 W	27	10237855		10237856
	3000 K - Efficient White	94	3670 lm	37 W	27	10250531		10250532
	3500 K	84	3800 lm	31 W	27	10237857		10237858
	4000 K	83	3875 lm	31 W	27	10237859		10237860
	4000 K - Efficient Cool	91	3925 lm	37 W	27	10249766		10249767
3000 lm	BF	98	2640 lm	31 W	27	10250533		10250534

Technical details as well as weight specifications and measurements have been prepared with care. Errors excepted. All dimensions in mm · LED service life data: L80/B10 at ambient temperature (ta) 25°C. Rated lamp service life 50,000h. Luminous flux and efficiency specifications are subject to a tolerance of +/- 10%. Min CRI Ra: >80 / >90 · Product images are used as an example and may differ from the original · We reserve the right to make changes, insofar as they serve progress. The Single Lighting Regulation (SLR) documentation can be found in our download area. Oktalite Lichttechnik GmbH · Mathias-Brüggen-Str. 73 · 50829 Cologne · T 49 221 59767-0 · F 49 221 59767-40 · mail@oktalite.com · www.oktalite.com · 2022-11-29

* System luminous flux based on medium flood reflector.



Efficient White: $R_9 = 75$, $R_r = 91$, $R_g = 102$



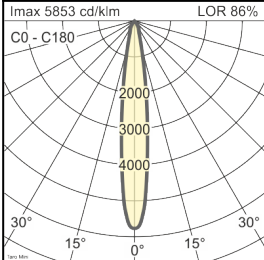
Brilliant Colour: $R_9 = 94$, $R_r = 95$, $R_g = 104$

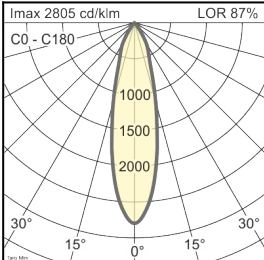
Technical details as well as weight specifications and measurements have been prepared with care. Errors excepted. All dimensions in mm · LED service life data: L80/B10 at ambient temperature (t_a) 25°C. Rated lamp service life 50,000h. Luminous flux and efficiency specifications are subject to a tolerance of $\pm 10\%$. Min CRI Ra: >80 / >90 · Product images are used as an example and may differ from the original · We reserve the right to make changes, insofar as they serve progress. The Single Lighting Regulation (SLR) documentation can be found in our download area. Oktalite Lichttechnik GmbH · Mathias-Brüggen-Str. 73 · 50829 Cologne · T 49 221 59767-0 · F 49 221 59767-40 · mail@oktalite.com · www.oktalite.com · 2022-11-29

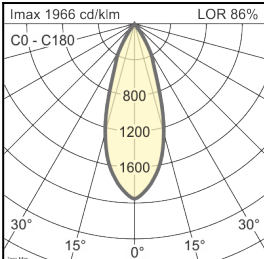
Optic Taro Mini - LED

oktalite

Optic 3D faceted reflectors
 Type interchangeable reflector system

Beam angle				Cover	LOR	Order number																		
Spot						white	silver	black																
Taro Mini - SP <table border="1"> <thead> <tr> <th>Höhe [m]</th> <th>KegelØ [cm]</th> <th>E(0°) [lx/klm]</th> <th>E(C0) [lx/klm]</th> </tr> </thead> <tbody> <tr> <td>1</td> <td>26</td> <td>5853</td> <td>2896</td> </tr> <tr> <td>2</td> <td>51</td> <td>1463</td> <td>724</td> </tr> <tr> <td>3</td> <td>77</td> <td>650</td> <td>322</td> </tr> </tbody> </table>				Höhe [m]	KegelØ [cm]	E(0°) [lx/klm]	E(C0) [lx/klm]	1	26	5853	2896	2	51	1463	724	3	77	650	322	without	86 %	10186769	-	10186771
Höhe [m]	KegelØ [cm]	E(0°) [lx/klm]	E(C0) [lx/klm]																					
1	26	5853	2896																					
2	51	1463	724																					
3	77	650	322																					
																								

Beam angle				Cover	LOR	Order number																		
Medium Flood						white	silver	black																
Taro Mini - MF <table border="1"> <thead> <tr> <th>Höhe [m]</th> <th>KegelØ [cm]</th> <th>E(0°) [lx/klm]</th> <th>E(C0) [lx/klm]</th> </tr> </thead> <tbody> <tr> <td>1</td> <td>46</td> <td>2805</td> <td>1308</td> </tr> <tr> <td>2</td> <td>92</td> <td>701</td> <td>327</td> </tr> <tr> <td>3</td> <td>137</td> <td>312</td> <td>145</td> </tr> </tbody> </table>				Höhe [m]	KegelØ [cm]	E(0°) [lx/klm]	E(C0) [lx/klm]	1	46	2805	1308	2	92	701	327	3	137	312	145	without	87 %	10186772	-	10186774
Höhe [m]	KegelØ [cm]	E(0°) [lx/klm]	E(C0) [lx/klm]																					
1	46	2805	1308																					
2	92	701	327																					
3	137	312	145																					
																								

Beam angle				Cover	LOR	Order number																		
Flood						white	silver	black																
Taro Mini - FL <table border="1"> <thead> <tr> <th>Höhe [m]</th> <th>KegelØ [cm]</th> <th>E(0°) [lx/klm]</th> <th>E(C0) [lx/klm]</th> </tr> </thead> <tbody> <tr> <td>1</td> <td>66</td> <td>1966</td> <td>850</td> </tr> <tr> <td>2</td> <td>132</td> <td>492</td> <td>212</td> </tr> <tr> <td>3</td> <td>197</td> <td>218</td> <td>94</td> </tr> </tbody> </table>				Höhe [m]	KegelØ [cm]	E(0°) [lx/klm]	E(C0) [lx/klm]	1	66	1966	850	2	132	492	212	3	197	218	94	without	86 %	10186775	-	10186777
Höhe [m]	KegelØ [cm]	E(0°) [lx/klm]	E(C0) [lx/klm]																					
1	66	1966	850																					
2	132	492	212																					
3	197	218	94																					
																								

Technical details as well as weight specifications and measurements have been prepared with care. Errors excepted. All dimensions in mm · LED service life data: L80/B10 at ambient temperature (ta) 25°C. Rated lamp service life 50,000h. Luminous flux and efficiency specifications are subject to a tolerance of +/- 10%. Min CRI Ra: >80 / >90· Product images are used as an example and may differ from the original · We reserve the right to make changes, insofar as they serve progress. The Single Lighting Regulation (SLR) documentation can be found in our download area. Oktalite Lichttechnik GmbH · Mathias-Brüggen-Str. 73 · 50829 Cologne · T 49 221 59767-0 · F 49 221 59767-40 · mail@oktalite.com · www.oktalite.com · 2022-11-29

Optic Taro Mini - LED

oktalite

Optic 3D faceted reflectors
 Type interchangeable reflector system

Beam angle				Cover	LOR	Order number																			
Wide Flood						white	silver	black																	
Taro Mini - WFL <table border="1"> <thead> <tr> <th>Höhe [m]</th> <th>KegelØ [cm]</th> <th>E(0°) [lx/klm]</th> <th>E(C0) [lx/klm]</th> </tr> </thead> <tbody> <tr> <td>1</td> <td>84</td> <td>1506</td> <td>590</td> </tr> <tr> <td>2</td> <td>169</td> <td>376</td> <td>148</td> </tr> <tr> <td>3</td> <td>253</td> <td>167</td> <td>66</td> </tr> </tbody> </table>				Höhe [m]	KegelØ [cm]	E(0°) [lx/klm]	E(C0) [lx/klm]	1	84	1506	590	2	169	376	148	3	253	167	66		without	86 %	10186778	-	10186780
Höhe [m]	KegelØ [cm]	E(0°) [lx/klm]	E(C0) [lx/klm]																						
1	84	1506	590																						
2	169	376	148																						
3	253	167	66																						

Beam angle				Cover	LOR	Order number																			
Very Wide Flood						white	silver	black																	
Taro Mini - VFL <table border="1"> <thead> <tr> <th>Höhe [m]</th> <th>KegelØ [cm]</th> <th>E(0°) [lx/klm]</th> <th>E(C0) [lx/klm]</th> </tr> </thead> <tbody> <tr> <td>1</td> <td>114</td> <td>1064</td> <td>349</td> </tr> <tr> <td>2</td> <td>228</td> <td>266</td> <td>87</td> </tr> <tr> <td>3</td> <td>342</td> <td>118</td> <td>39</td> </tr> </tbody> </table>				Höhe [m]	KegelØ [cm]	E(0°) [lx/klm]	E(C0) [lx/klm]	1	114	1064	349	2	228	266	87	3	342	118	39		without	86 %	10186781	-	10186783
Höhe [m]	KegelØ [cm]	E(0°) [lx/klm]	E(C0) [lx/klm]																						
1	114	1064	349																						
2	228	266	87																						
3	342	118	39																						

Technical details as well as weight specifications and measurements have been prepared with care. Errors excepted. All dimensions in mm · LED service life data: L80/B10 at ambient temperature (ta) 25°C. Rated lamp service life 50,000h. Luminous flux and efficiency specifications are subject to a tolerance of +/- 10%. Min CRI Ra: >80 / >90· Product images are used as an example and may differ from the original · We reserve the right to make changes, insofar as they serve progress. The Single Lighting Regulation (SLR) documentation can be found in our download area. Oktalite Lichttechnik GmbH · Mathias-Brüggen-Str. 73 · 50829 Cologne · T 49 221 59767-0 · F 49 221 59767-40 · mail@oktalite.com · www.oktalite.com · 2022-11-29